

NOTES:

1. MATERIAL:

- 1.1 HOUSING: PA9T
- 1.2 DIELECTRIC: LCP
- 1.3 SHELL: ZAMAK3
- 1.4 CONTACT: BRASS

2. FINISH

CONTACT:

CONTACT:SEE ORDER INFORMATION

UNDERPLATING:50~100u" NICKEL OVERALL

SHELL:120u"~240u" MATTE TIN

3. SPEC. PLS. REFER TO PS 92806-XXXX-XXX

4. PACKAGE PLS. REFER TO 92806-001CR-U

5. PART NUMBER

92806-001 X X -CAX

CKTS

Coding:

PACKING

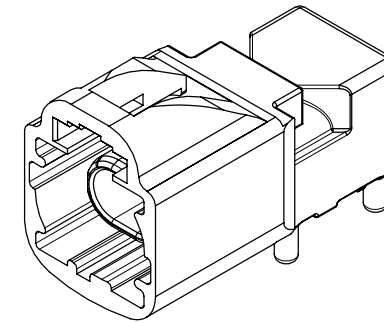
CAX:X REPRESENT CODE.

REFERENCE ON Page.2 TABLE

0:TAPE & REEL

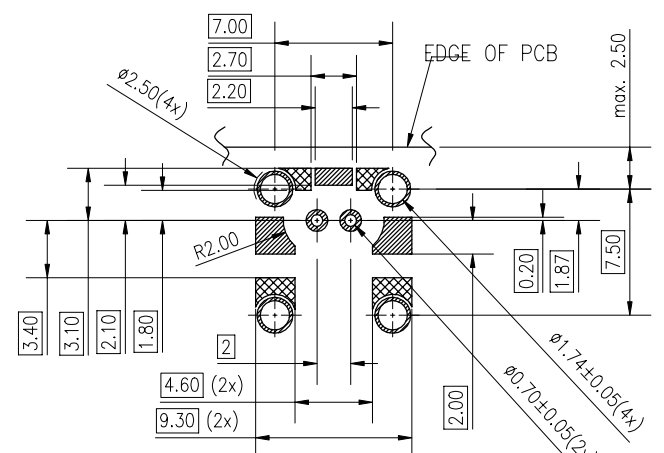
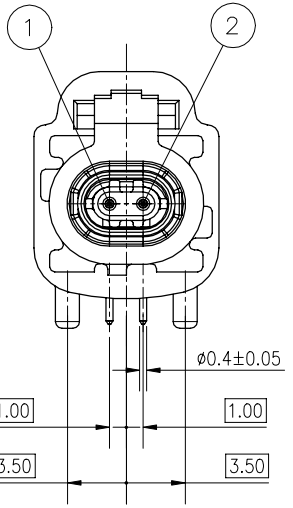
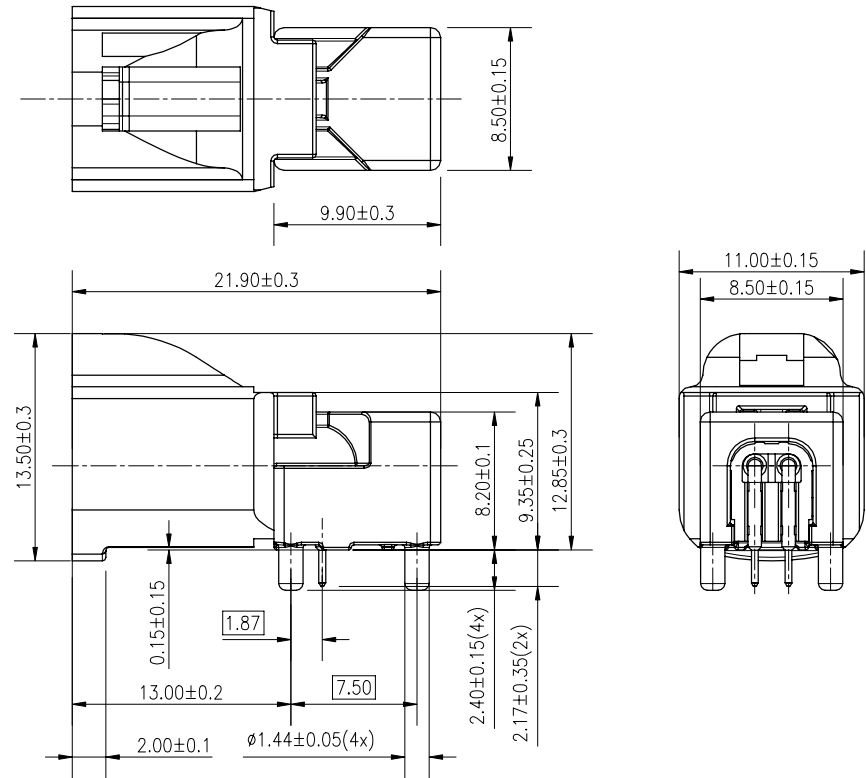
PLATING

0: 6u"GOLD



WEIGHT
4.2g

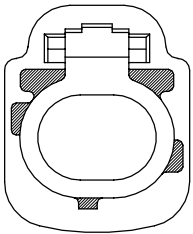
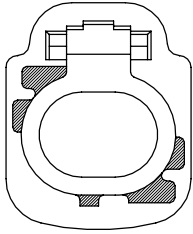
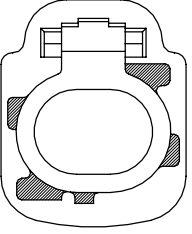
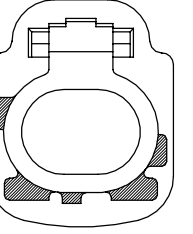
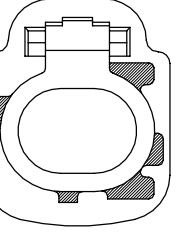
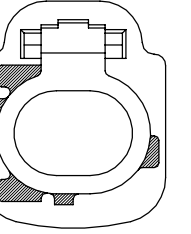
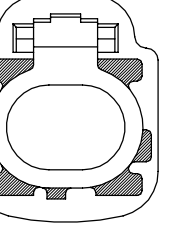
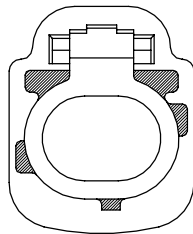
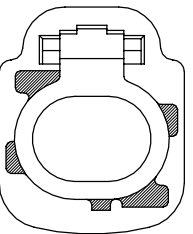
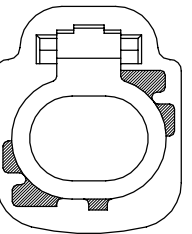
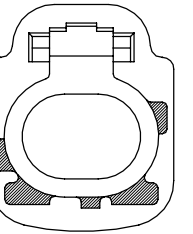
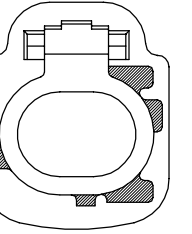
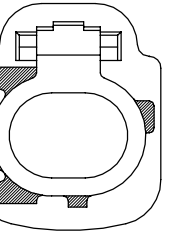
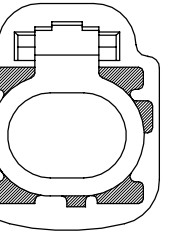
QUALITY SYMBOLS MAJOR Ⓢ CRITICAL Ⓣ GENERAL TOLERANCES (UNLESS SPECIFIED) .X ±0.15 .X ±0.10 .XX ±0.05 .XXX ±0.02 ANGLES ±1°	DRAWN BY YANG TZU HSUAN DATE 23/11/22	 ACES ELECTRONICS	
	CHECKED BY HSU CHENG HSING DATE 23/11/22		
APPROVED BY LEE KUANG EN DATE 23/11/22	UNITS mm	SIZE A4	RFQ NO. NA
SCALE 1:1	SHEET NO. 1 OF 2	REV D	DWG NO. 92806-001XX-XXX


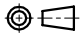


Solder Area
 Keep out Area

RECOMMENDED PCB LAYOUT
GENERAL TOLERANCE ±0.05

TABLE for Coding:

Coding	A	B	C	D	E	F	Z
Plug							
Color	Jet Black	Pure White	Light Blue	Claret Violet	May Green	Nut Brown	Water Blue
RAL	sim.9005	sim.9010	sim.5012	sim.4004	sim.6017	sim.8011	sim.5021
Coding	G	H	J	K	L	M	O
Plug							
Color	Platinum Grey	Light Pink	Beige	Curry	Yellow Green	Pastel Orange	Light Green
RAL	sim.7036	sim.3015	sim.1001	sim.1027	sim.6018	sim.2003	sim.6027

QUALITY SYMBOLS MAJOR Ⓢ CRITICAL Ⓢ GENERAL TOLERANCES (UNLESS SPECIFIED) X. ±0.15 .X ±0.10 .XX ±0.05 .XXX ±0.02 ANGLES ±1°	DRAWN BY YANG TZU HSUAN 23/11/22	DATE 23/11/22	
	CHECKED BY HSU CHENG HSING 23/11/22	DATE 23/11/22	
	APPROVED BY LEE KUANG EN 23/11/22	DATE 23/11/22	R/Q NO. NA
	UNITS mm		SIZE A4
	SCALE 1 : 1	SHEET NO. 2 OF 2	REV D
			DWG NO. 92806-001XX-XXX